

METAPHOR[®]

A GIS APPLICATION FROM INFINITI SYSTEMS GROUP

METAPHOR [met-uh-fawr]; the understanding of one concept in terms of another. The first can be economically described because implicit and explicit attributes from the second are used to enhance the description of the first.

If you have invested, or are considering investing in a Geospatial Information System, have you considered the costs and labor associated with turning your data into actionable information?

Information is what **METAPHOR** is all about:

Once you have assembled CAD drawings, Topographical maps, GPS Data, imagery, and other multimedia sources. Your next task is to link this information to your enterprise database.

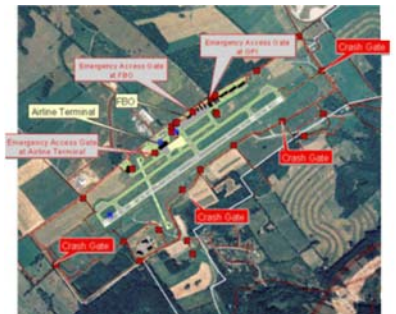
That completed, you are faced with a major strategic choice:

You can acquire a mapping technology such as MapGuide Enterprise / Open Source, or ESRI's ArcIMS / ArcGIS Servers then develop custom applications that will make your data accessible. Along the way, make sure the whole package is web enabled so you can distribute the information to your clients, staff or associates.

OR

Deploy **METAPHOR** from Infiniti
(we have done most of the work for you)

- Already MapGuide and ESRI enabled.*
- All facility and infrastructure data stored in a centralized system.
(easily and instantly accessible from the desktop)
- Delivered via Internet browser with standard web protocol.
(requires no client software - browser plug-in may be required)
- Centralized management of application components and data sources.
(can be deployed as a hosted –ASP– solution)
- Information in your mapping application can be accessed in a variety of ways including customized reports, queries and tabular interfaces.
(with real-time linking to spatial features)
- Administration Management module simplifies data entry, security and maintenance.
(more robust end-user access administration)



METAPHOR applications are **SECURE, INTUITIVE** and **SCALABLE**.

METAPHOR enables more effective decision-making across the entire organization, through the integration of traditional text base data (DBMS) and spatial data (CAD/GIS/GPS/Imagery). Decision-makers are able to use **METAPHOR** to increase operational efficiency, improve data accessibility, better manage data, and expedite both strategic capital planning and tactical project prioritization. **METAPHOR** applications have the ability to eliminate the need for "islands of information" syndrome – reducing the risk of integration of multiple disparate systems

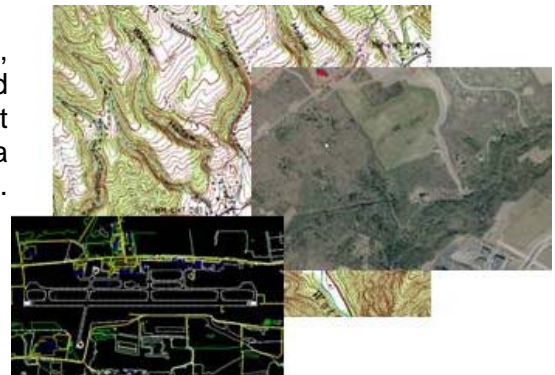
* ESRI ArcIMS / ArcGIS may require separate licensing depending on hosting local

METAPHOR®

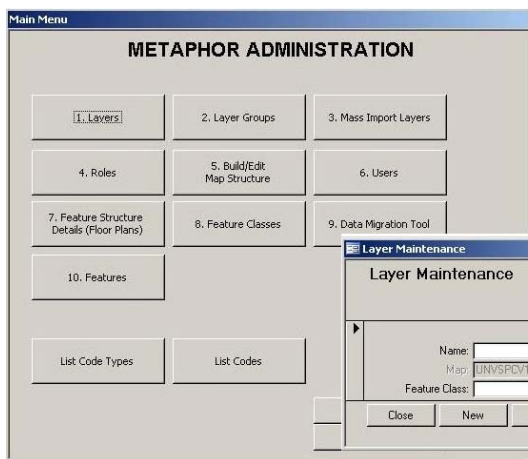
A GIS APPLICATION FROM INFINITI SYSTEMS GROUP

METAPHOR combines the latest in database technologies, Geographic Information Systems (GIS) technology and Programming technologies (.NET) to deliver an intelligent visualization application that allows access assets through a visual interface.

Instantly visualize information through a web browser via any internet connected PC



Data is managed through a relation database program interface that is intuitive, functional and secure.

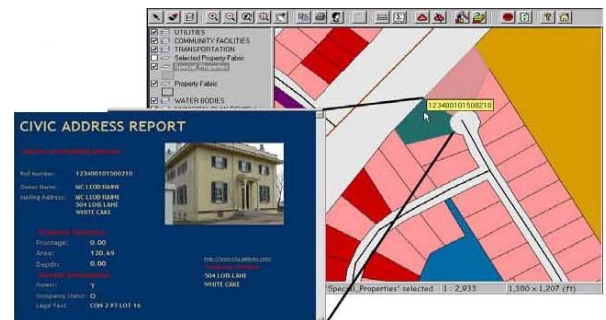


METAPHOR is a GIS driven intelligent visualization application integrated with any RDBMS providing a 'map based' view of an organizations macro and micro infrastructure to standardize, expedite, analyze and simplify access to data.

Information in your municipal mapping application can be accessed in a variety of ways including customized reports, queries and tabular interfaces with real-time linking to spatial features.

A customized report might be accessed from a clickable special interface.

Clicking on the map property produces a report or a list of available reports which appear in a new window



Make Your Vision and Your Investment Meaningful

You have invested a lot in the development of your company's facility management systems. Now it's time to let it help the decision making process AND help front-line employees understand why it's relevant to them.

- Connect people to the "BIG" picture of their infrastructure.
- Assist with decisions that lead to cost saving solutions.
- Help people understand how they can apply the system to their daily work